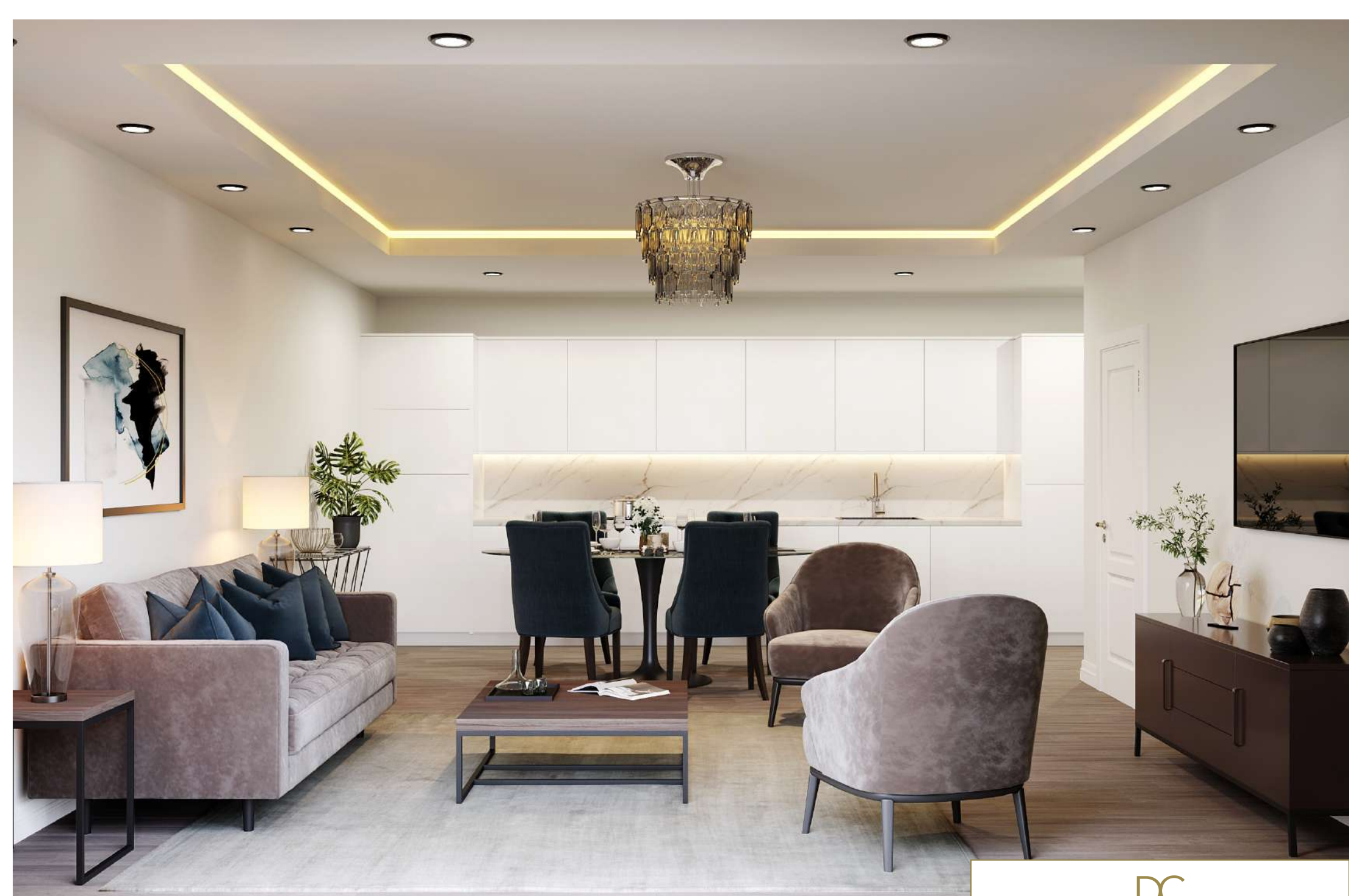


APARTMENTS

West Wing

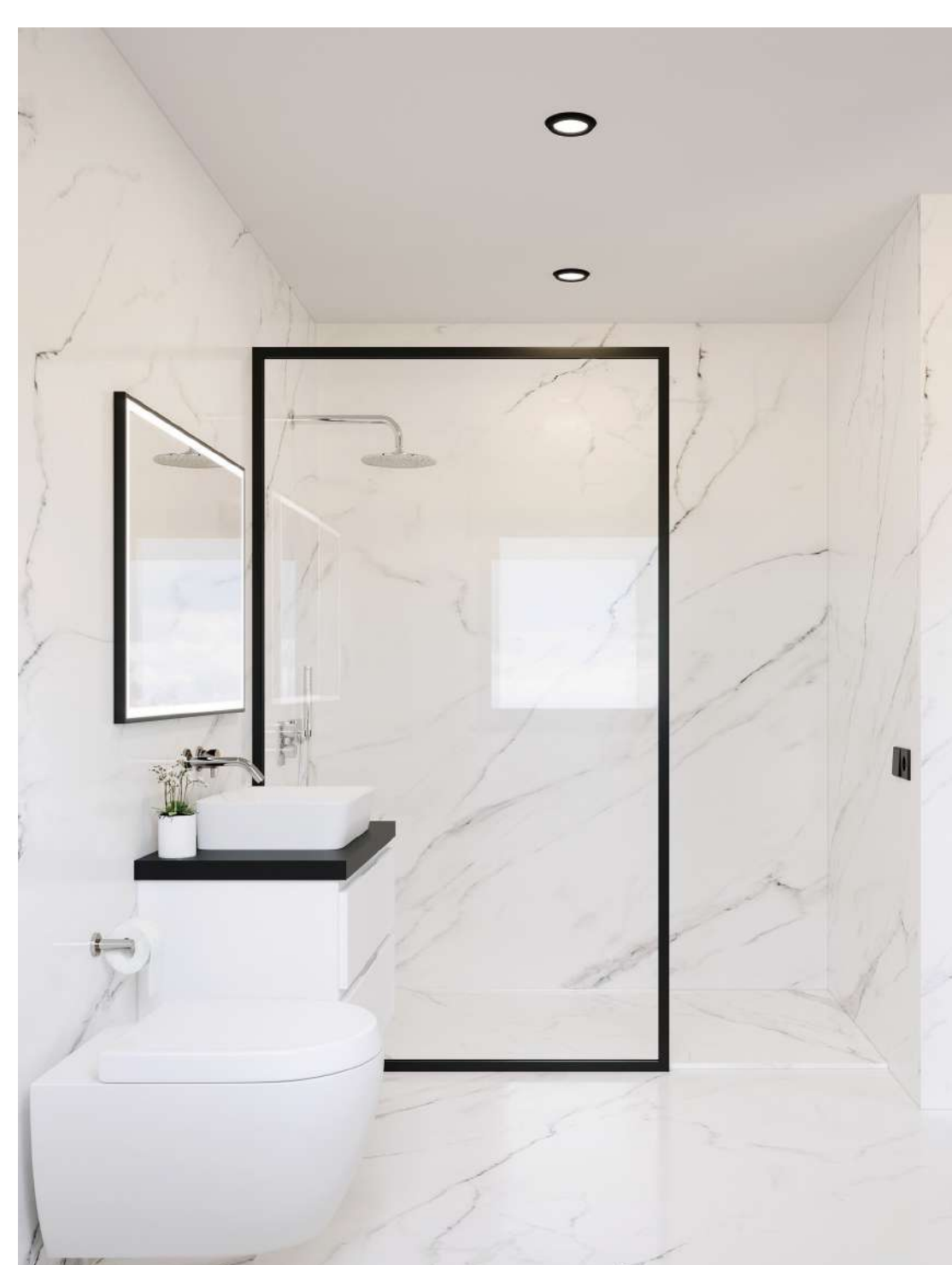












SPECIFICATION

General

- ❖ Fully gated entrance with secure video and intercom access
- ❖ Porcelanosa floor tiles throughout
- ❖ Open plan kitchen with spacious living room for easy luxury living
- ❖ Balcony overlooking Carbis Bay and beyond
- ❖ Lift access to West Wing apartments and communal areas.
- ❖ LED Lighting
- ❖ 10 Year Warranty with 999 year leasehold

Finishes

- ❖ Audio/visual door entry system
- ❖ Secure Gated access to the development
- ❖ Security locking to entrance door
- ❖ Mains smoke detectors to hallways
- ❖ Recessed lighting to kitchen, living area
- ❖ Satin chrome screwless electrical finishes
- ❖ BT phone points to all major rooms
- ❖ Shaver points to family bathroom and master en-suite
- ❖ Under floor heating throughout with individual room thermostats

Bathrooms

- ❖ Porcelanosa floor and wall tiles
- ❖ Duravit D-Neo Wall Mounted WCs
- ❖ Duravit Basin and Vanity Units Single and Double sinks
- ❖ Merlyn Walk-Shower Panels and Merlyn Touchstone Rectangle Shower Trays
- ❖ Vado Tapware and Vado Accessories
- ❖ Grohe Concealed Cistern and Skate Flush Plates
- ❖ Waters Cove Back-to-wall Bath
- ❖ The Sussex Range Pevensey heated towel rails

External

- ❖ Landscaped grounds to front elevations
- ❖ Low maintenance design with all year round use
- ❖ Secure grounds with electric gates and allocated parking
- ❖ Recessed external LED lighting activated by proximity sensors

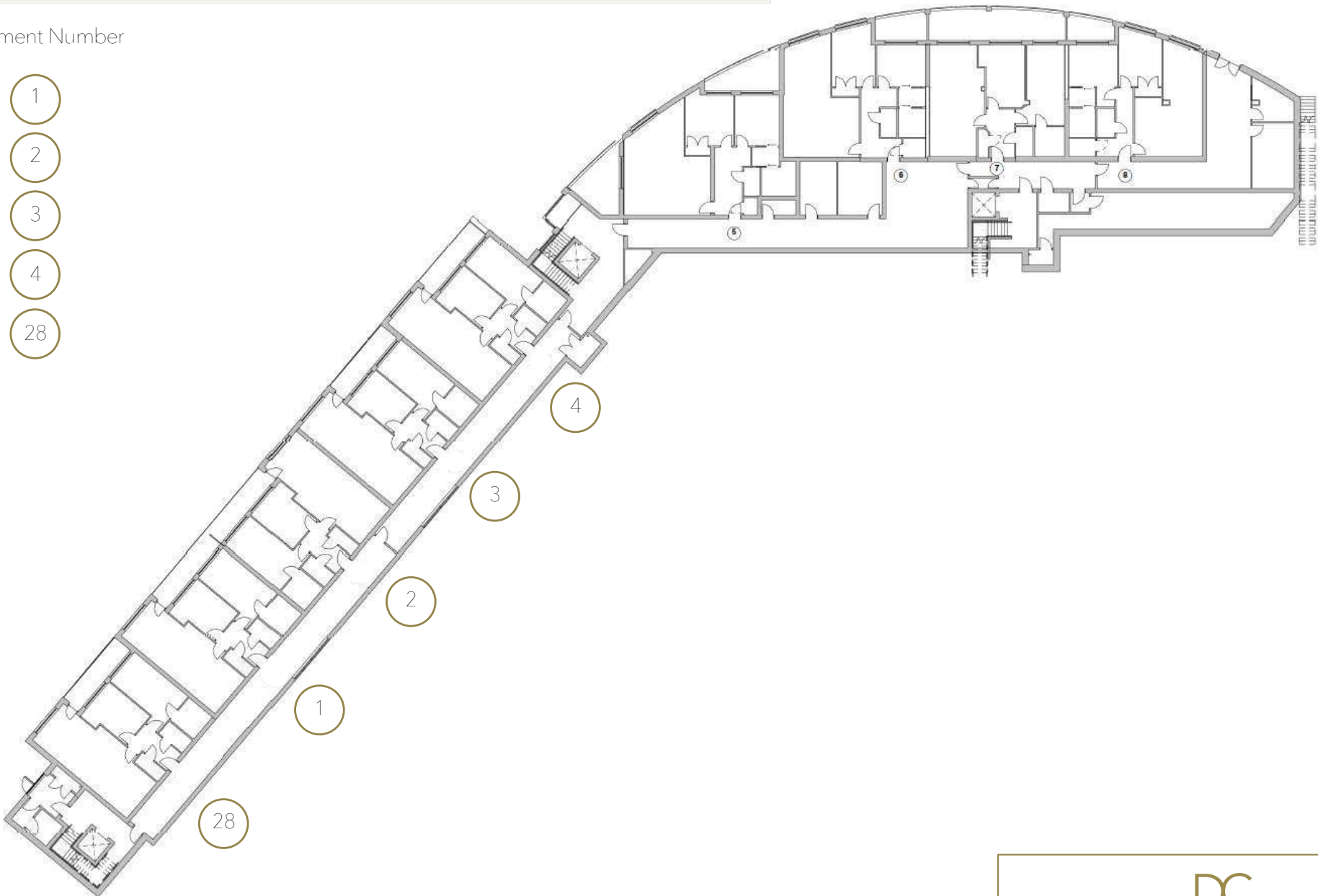
Kitchen

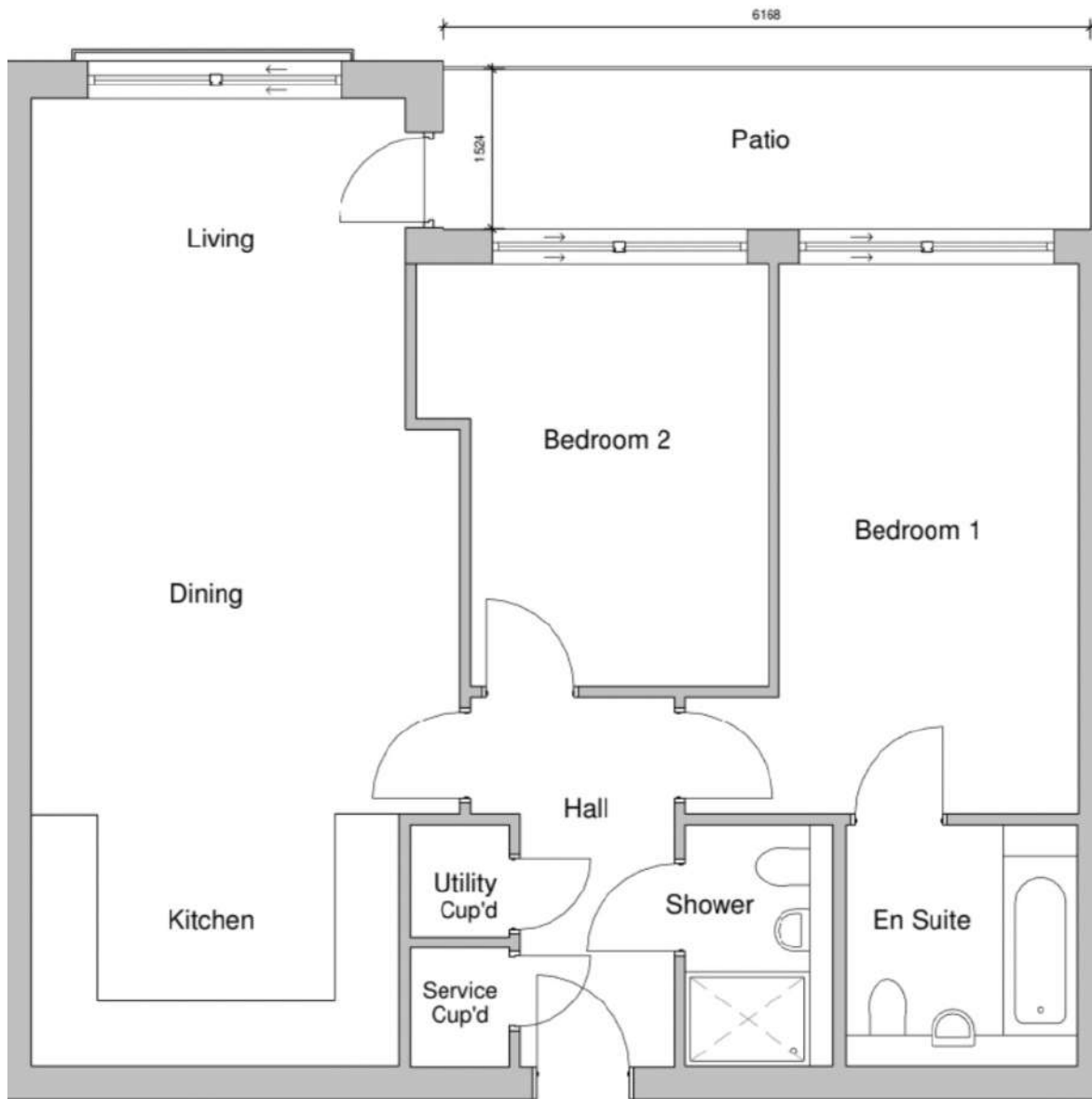
- ❖ Built in multi-function Neff Oven
- ❖ Built in Neff combination Microwave
- ❖ Neff Warming Drawer
- ❖ Neff Induction Hob with 4 flexible cooking zones
- ❖ Integrated Neff Fridge/Freezer
- ❖ Integrated Neff Dishwasher
- ❖ Miele/Falmec Extraction (depending on apartment type)
- ❖ A choice of Quartz Worktops
- ❖ True Handleless kitchen furniture engineered to accommodate a selection of rails that creates a seamless, modern design.
- ❖ 18mm slab-style MFC doors with a smooth matt finish
- ❖ A selection of door and rail colours, carefully chosen, to give each kitchen its own character and styling

GROUND FLOOR WEST WING

Apartment Number

- 1
- 2
- 3
- 4
- 28



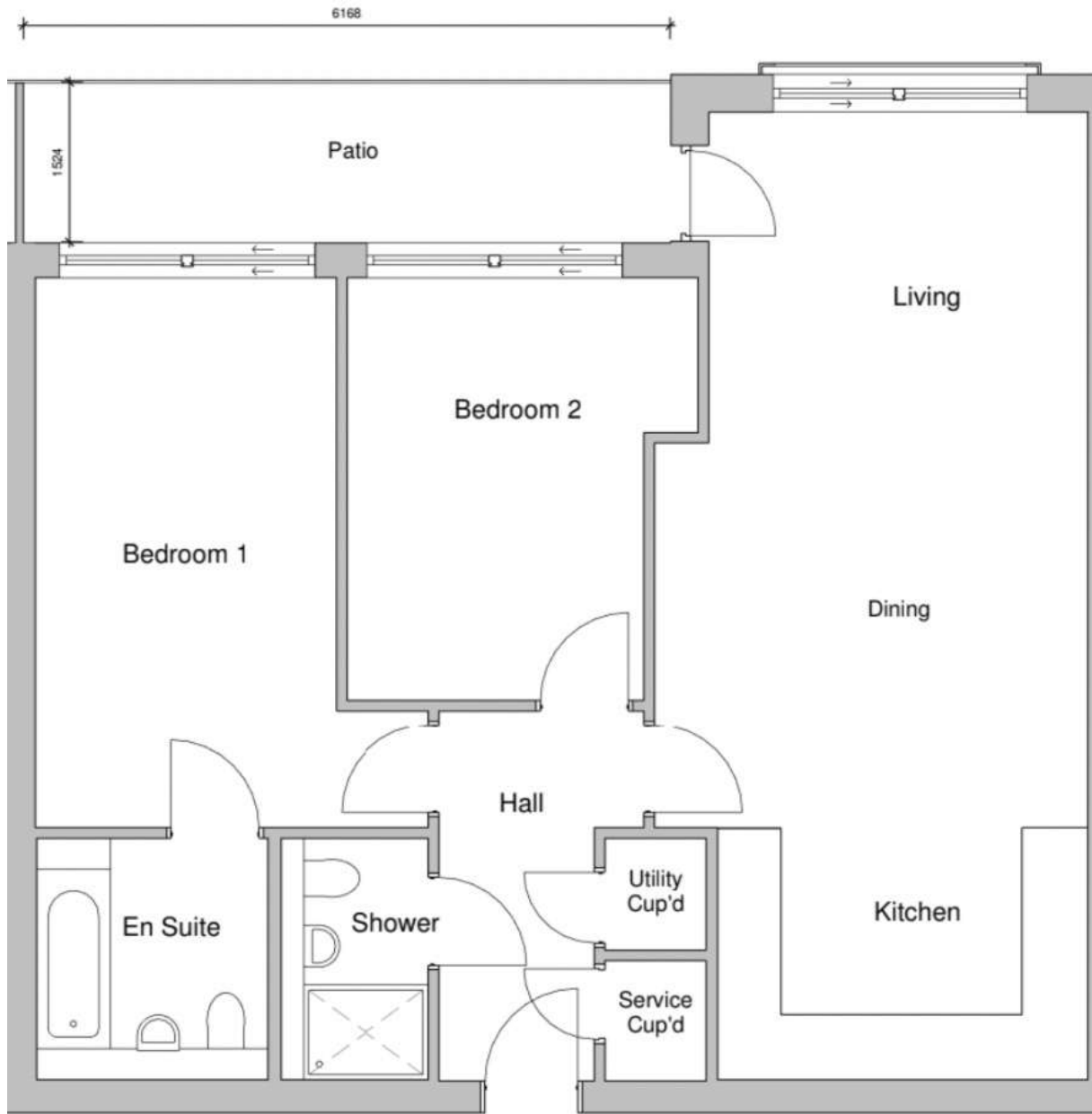


APARTMENT 1

	Size m	Size ft
Hall	1.675 x 3.535	5'6" x 11'7"
Cupboard	0.935 x 2.305	3'1" x 7'6"
Shower	1.215 x 2.295	4'0" x 7'6"
Kitchen/ Living / Dining	4.090 max x 9.220	13'5" max x 30'3" max
Bedroom 1	2.860 x 5.250	9'4" x 17'3"
En Suite	2.205 x 2.295	7'3" x 7'6"
Bedroom 2	3.350 max x 4.020	11'0" max x 13'2"
GIA	82m²	833ft²

GROUND FLOOR





APARTMENT 2

	Size m	Size ft
Hall	1.675 x 3.535	5'6" x 11'7"
Cupboard	0.935 x 2.305	3'1" x 7'6"
Shower	1.215 x 2.295	4'0" x 7'6"
Kitchen/ Living / Dining	4.133 max x 9.220	13'7" max x 30'3" max
Bedroom 1	2.860 x 5.250	9'4" x 17'3"
En Suite	2.205 x 2.295	7'3" x 7'6"
Bedroom 2	3.350 max x 4.020	11'0" max x 13'2"
GIA	82.4m²	887ft²

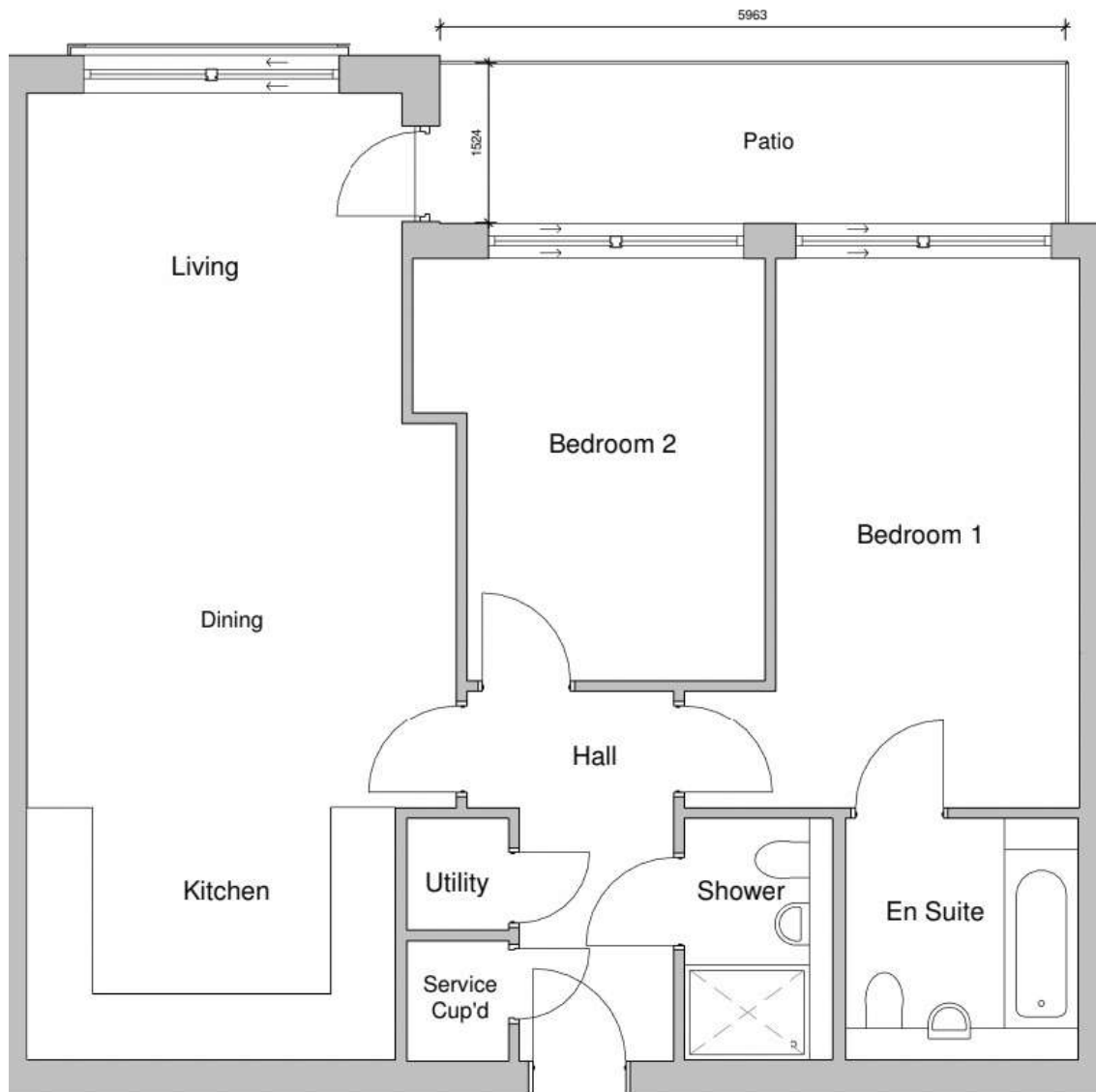
GROUND FLOOR



APARTMENT 3

	Size m	Size ft
Hall	1.675 x 3.535	5'6" x 11'7"
Cupboard	0.935 x 2.305	3'1" x 7'6"
Shower	1.215 x 2.295	4'0" x 7'6"
Kitchen/ Living / Dining	4.133 max x 9.220	13'7" max x 30'3" max
Bedroom 1	2.900 x 5.250	9'6" x 17'3"
En Suite	2.204 x 2.295	7'4" x 7'6"
Bedroom 2	3.350 max x 4.020	11'0" max x 13'2"
GIA	82.7m²	890ft²

GROUND FLOOR

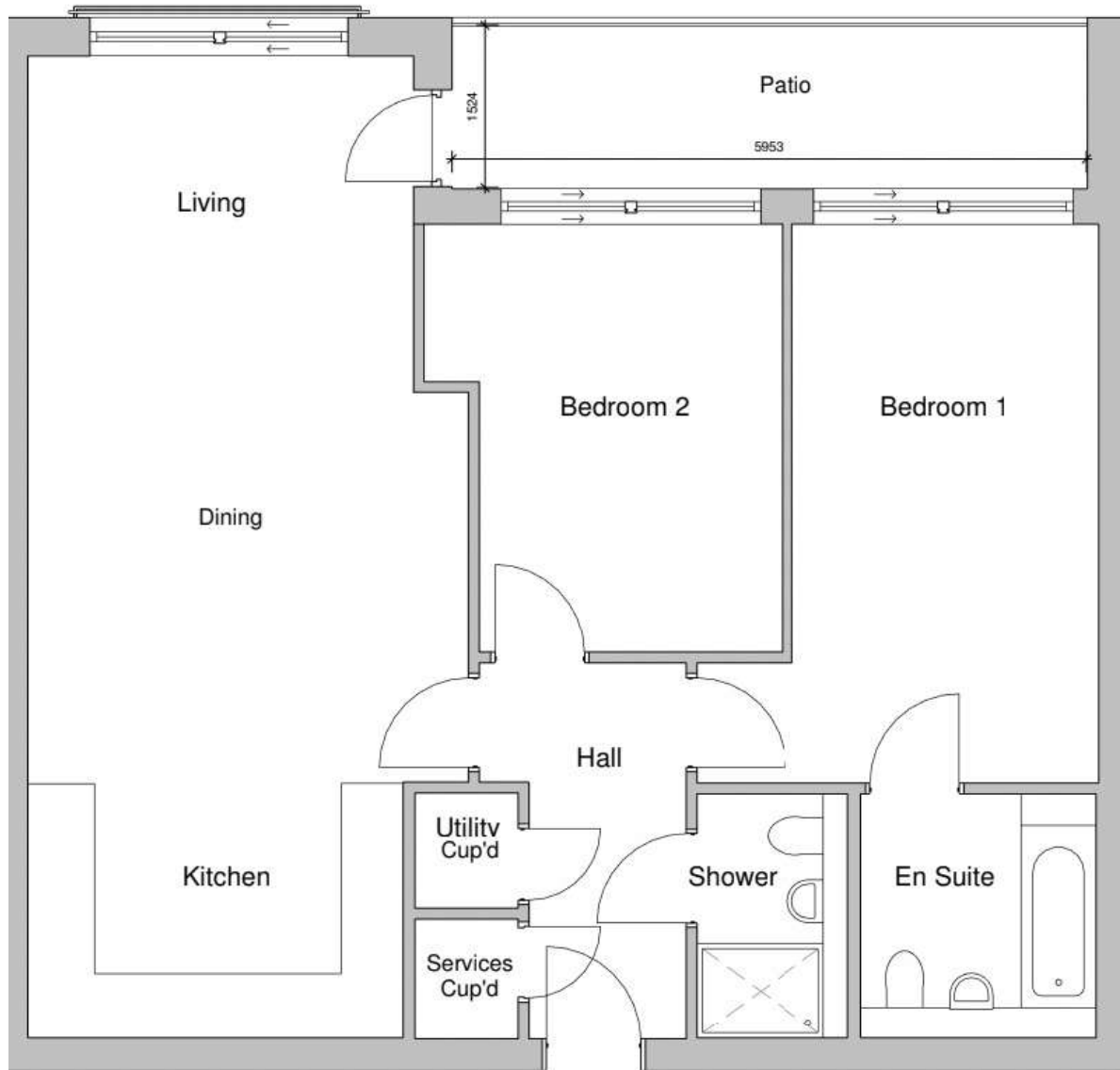


APARTMENT 4

	Size m	Size ft
Hall	1.675 x 3.535	5'6" x 11'7"
Cupboard	0.935 x 2.305	3'1" x 7'6"
Shower	1.215 x 2.295	4'0" x 7'6"
Kitchen/ Living / Dining	4.090 max x 9.220	13'5" max x 30'3"
Bedroom 1	2.900 x 5.250	9'6" x 17'3"
En Suite	2.240 x 2.295	7'4" x 7'6"
Bedroom 2	3.350 max x 4.020	11'0" max x 13'2"
GIA	82.3m²	886ft²

GROUND FLOOR





APARTMENT 28

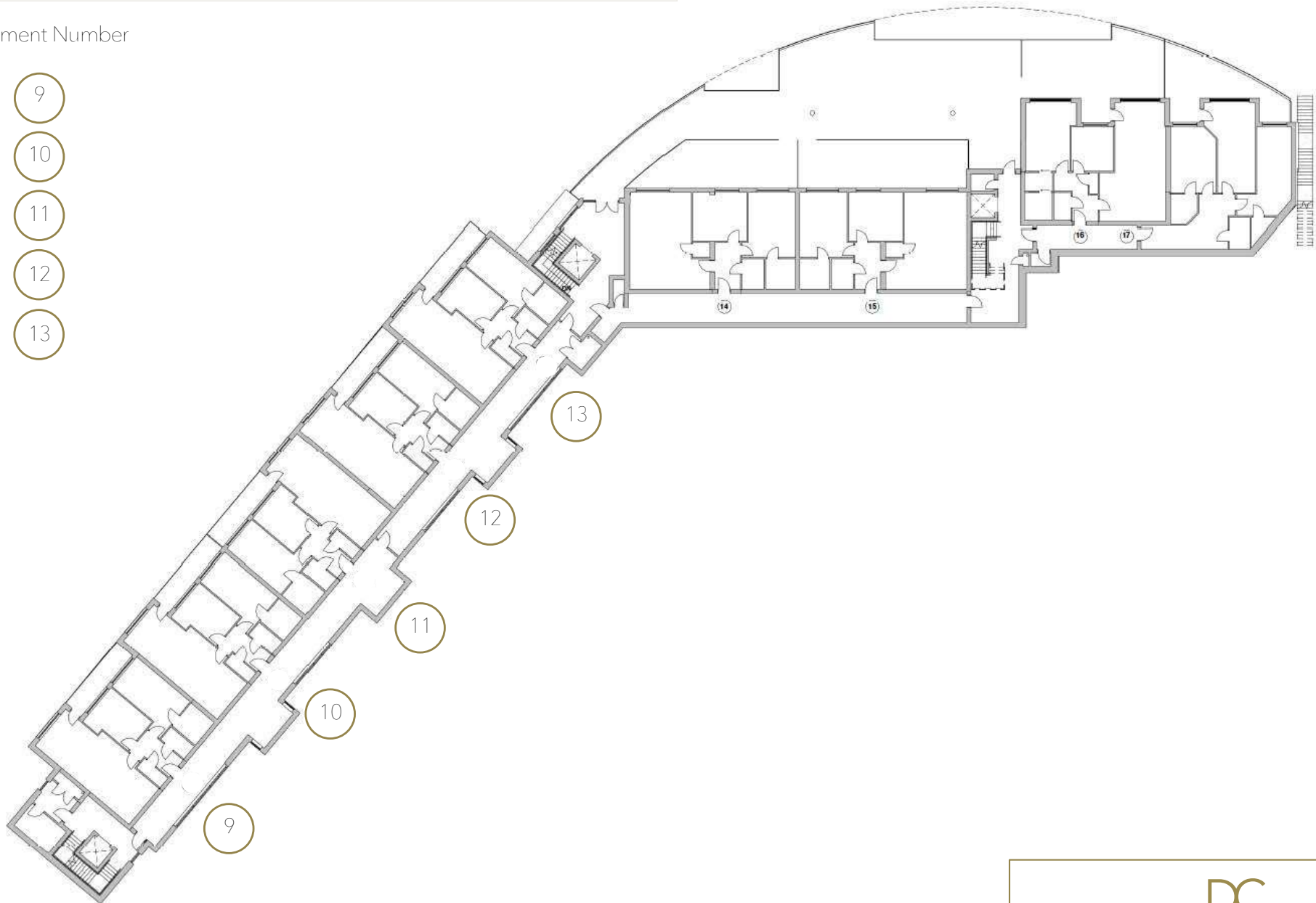
	Size m	Size ft
Hall	1.675 x 3.535	5'6" x 11'7"
Cupboard	0.935 x 2.315	3'1" x 7'7"
Shower	1.215 x 2.295	4'0" x 7'6"
Kitchen/ Living / Dining	4.130 max x 9.220	13'6" max x 30'3" max
Bedroom 1	2.865 x 5.250	9'4" x 17'3"
En Suite	2.205 x 2.295	7'3" x 7'6"
Bedroom 2	3.350 max x 4.020	11'0" max x 13'2"
GIA	82.4m²	887ft²

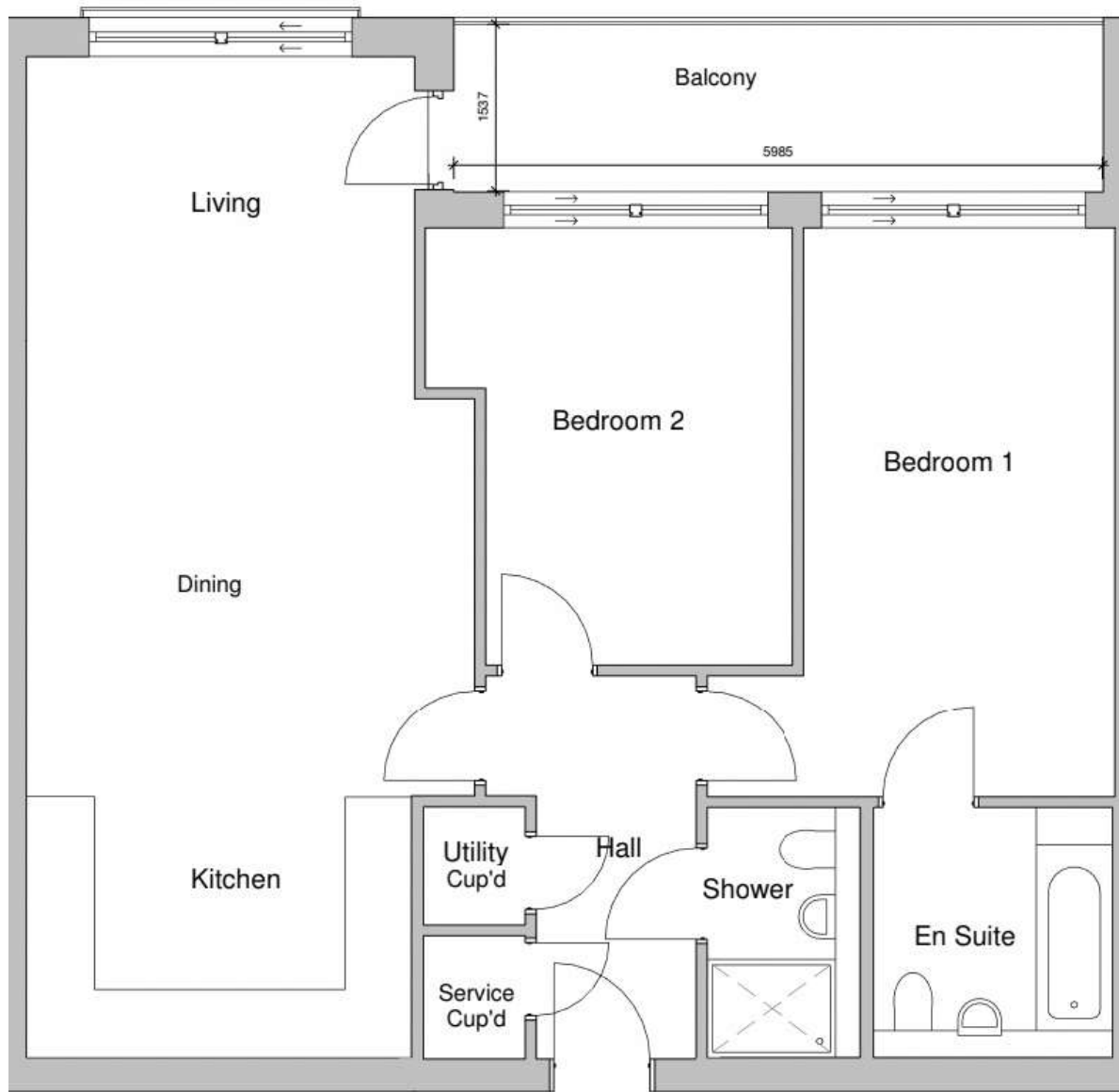
GROUND FLOOR

FIRST FLOOR WEST WING

Apartment Number

- 9
- 10
- 11
- 12
- 13



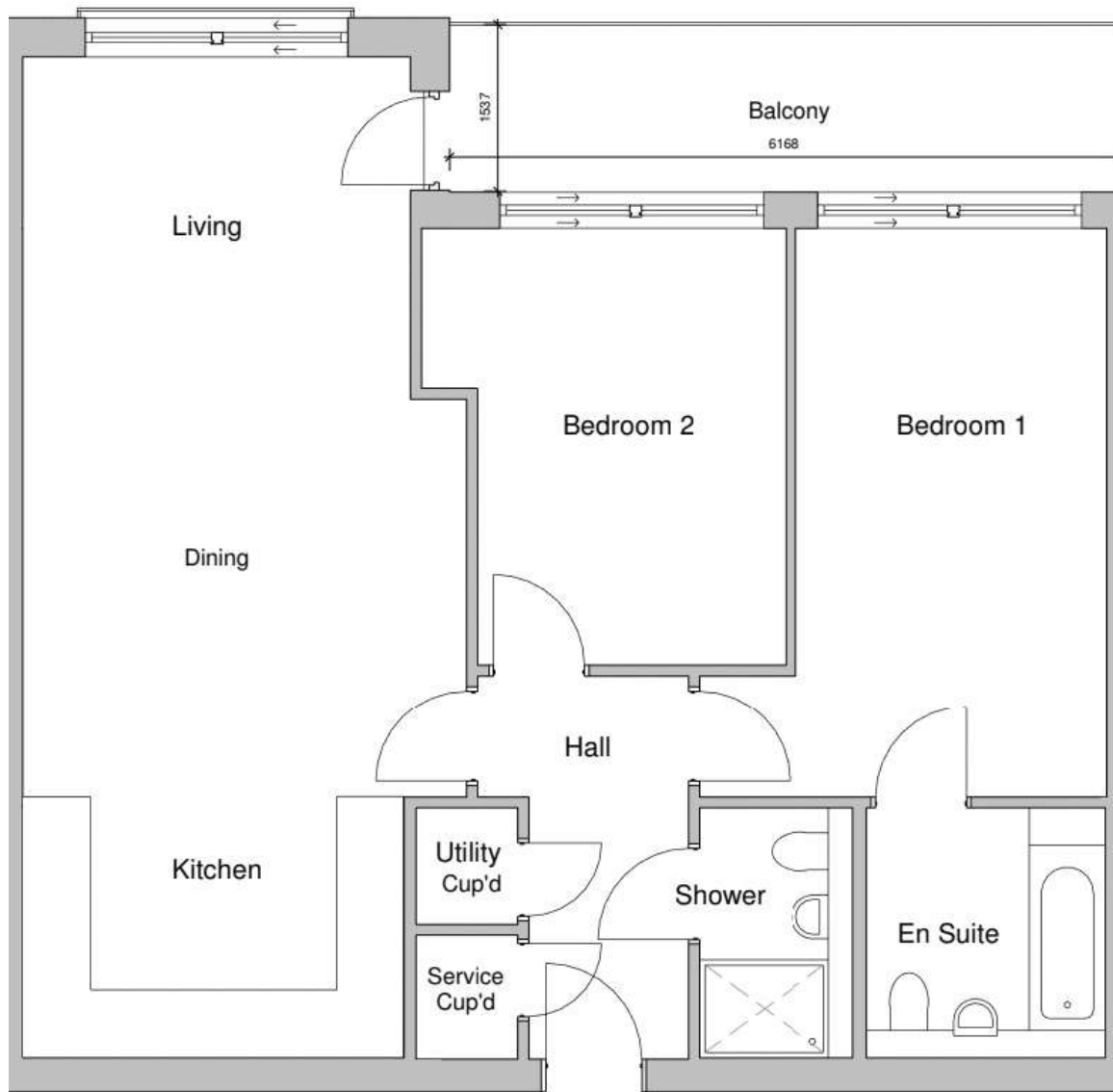


APARTMENT 9

	Size m	Size ft
Hall	1.675 x 3.535	5'6" x 11'7"
Cupboard	0.935 x 2.315	3'1" x 7'7"
Shower	1.215 x 2.295	4'0" x 7'6"
Kitchen/ Living / Dining	4.130 max x 9.220	13'6" max x 30'3" max
Bedroom 1	2.865 x 5.250	9'4" x 17'3"
En Suite	2.205 x 2.295	7'3" x 7'6"
Bedroom 2	3.350 max x 4.020	11'0" max x 13'2"
GIA	82.4m²	887ft²

FIRST FLOOR

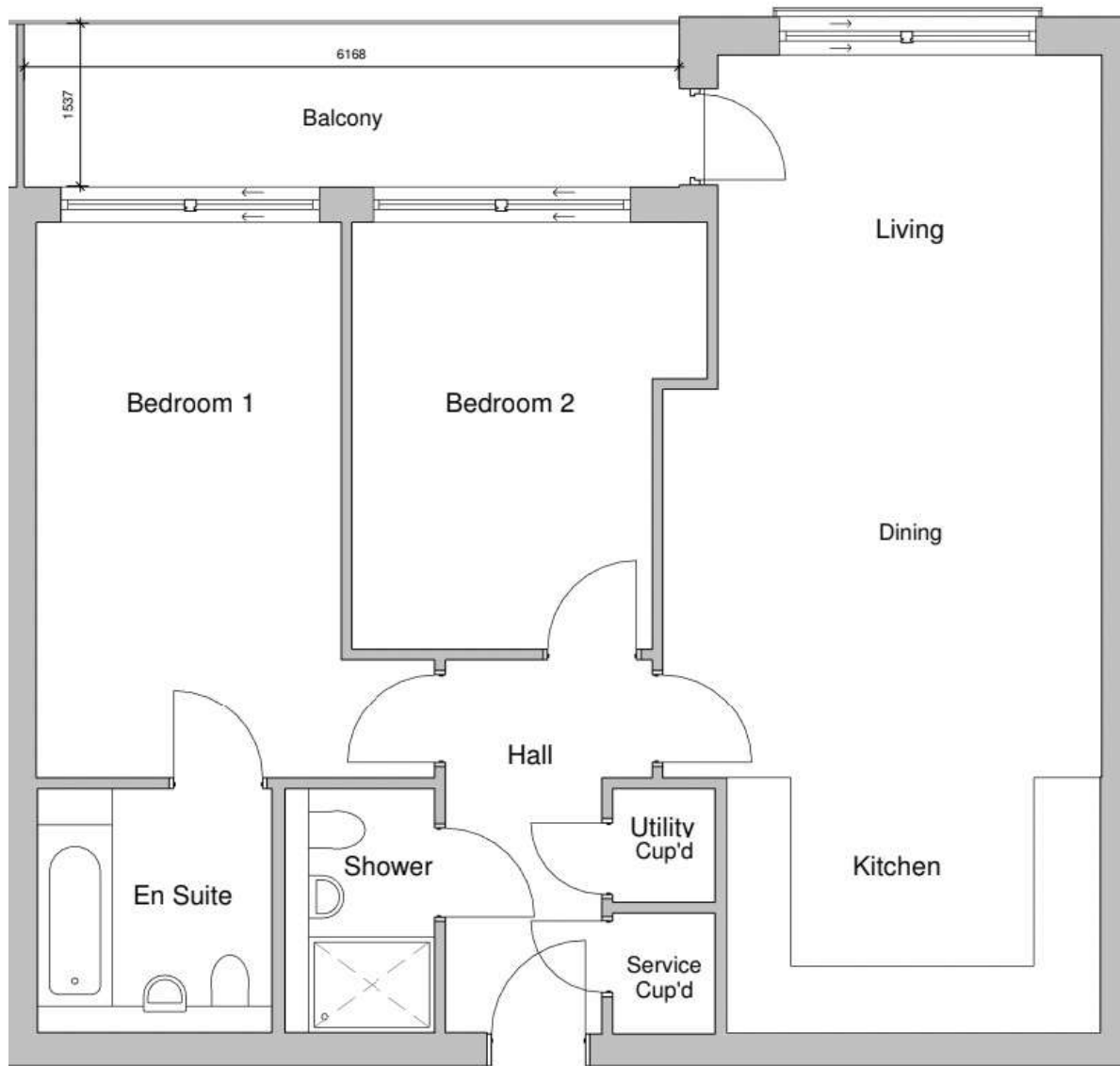




APARTMENT 10

	Size m	Size ft
Hall	1.675 x 3.535	5'6" x 11'7"
Cupboard	0.935 x 2.305	3'1" x 7'6"
Shower	1.215 x 2.295	4'0" x 7'6"
Kitchen/ Living / Dining	4.090 max x 9.220	13'5" max x 30'3" max
Bedroom 1	2.860 x 5.250	9'4" x 17'3"
En Suite	2.205 x 2.295	7'3" x 7'6"
Bedroom 2	3.350 max x 4.020	11'0" max x 13'2"
GIA	82m²	883ft²

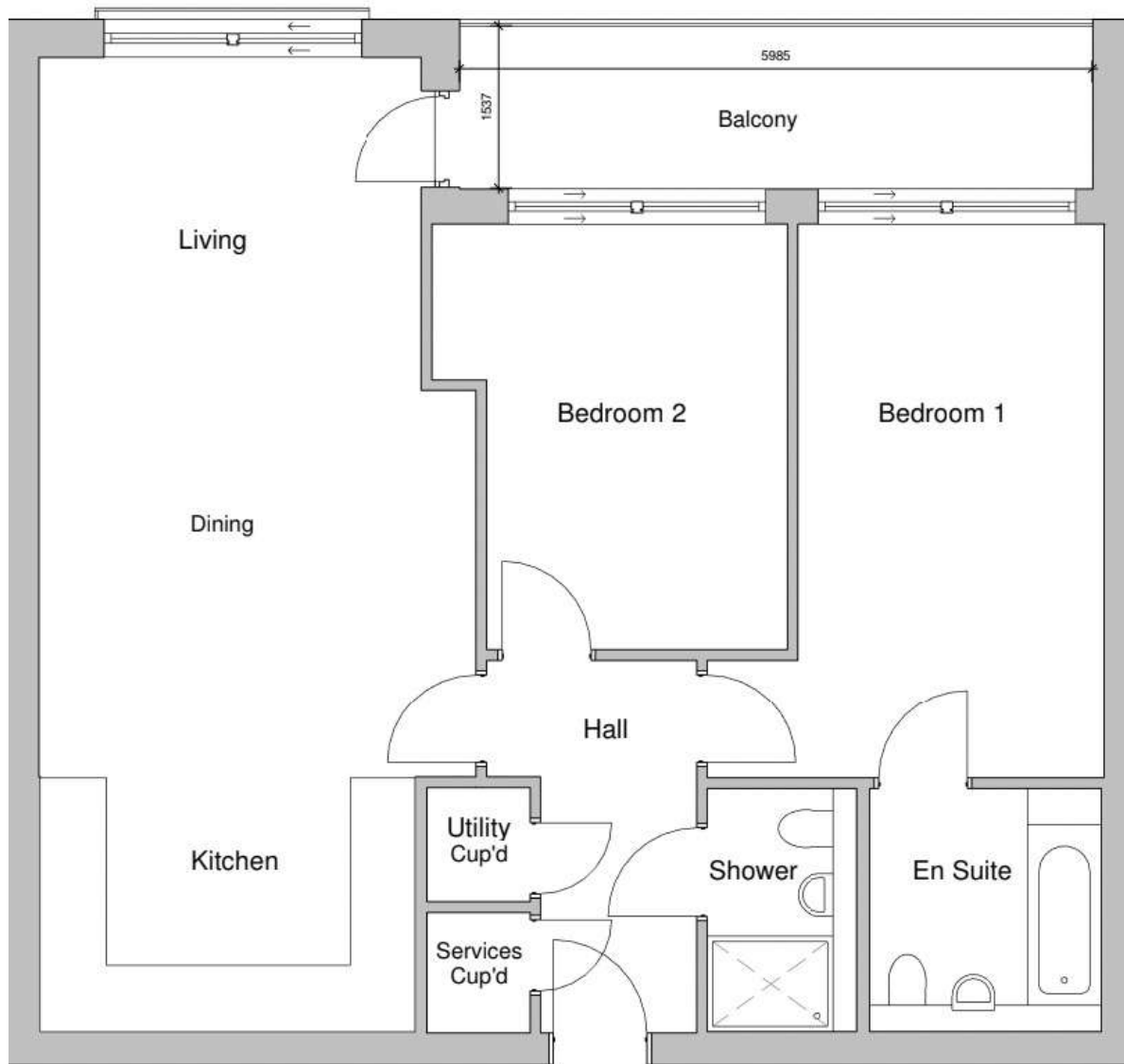
FIRST FLOOR



APARTMENT 11

	Size m	Size ft
Hall	1.675 x 3.535	5'6" x 11'7"
Cupboard	0.935 x 2.305	3'1" x 7'6"
Shower	1.215 x 2.295	4'0" x 7'6"
Kitchen/ Living / Dining	4.133 max x 9.220	13'7" max x 30'3" max
Bedroom 1	2.860 x 5.250	9'4" x 17'3"
En Suite	2.205 x 2.295	7'3" x 7'6"
Bedroom 2	3.350 max x 4.020	11'0" max x 13'2"
GIA	82.4m²	887ft²

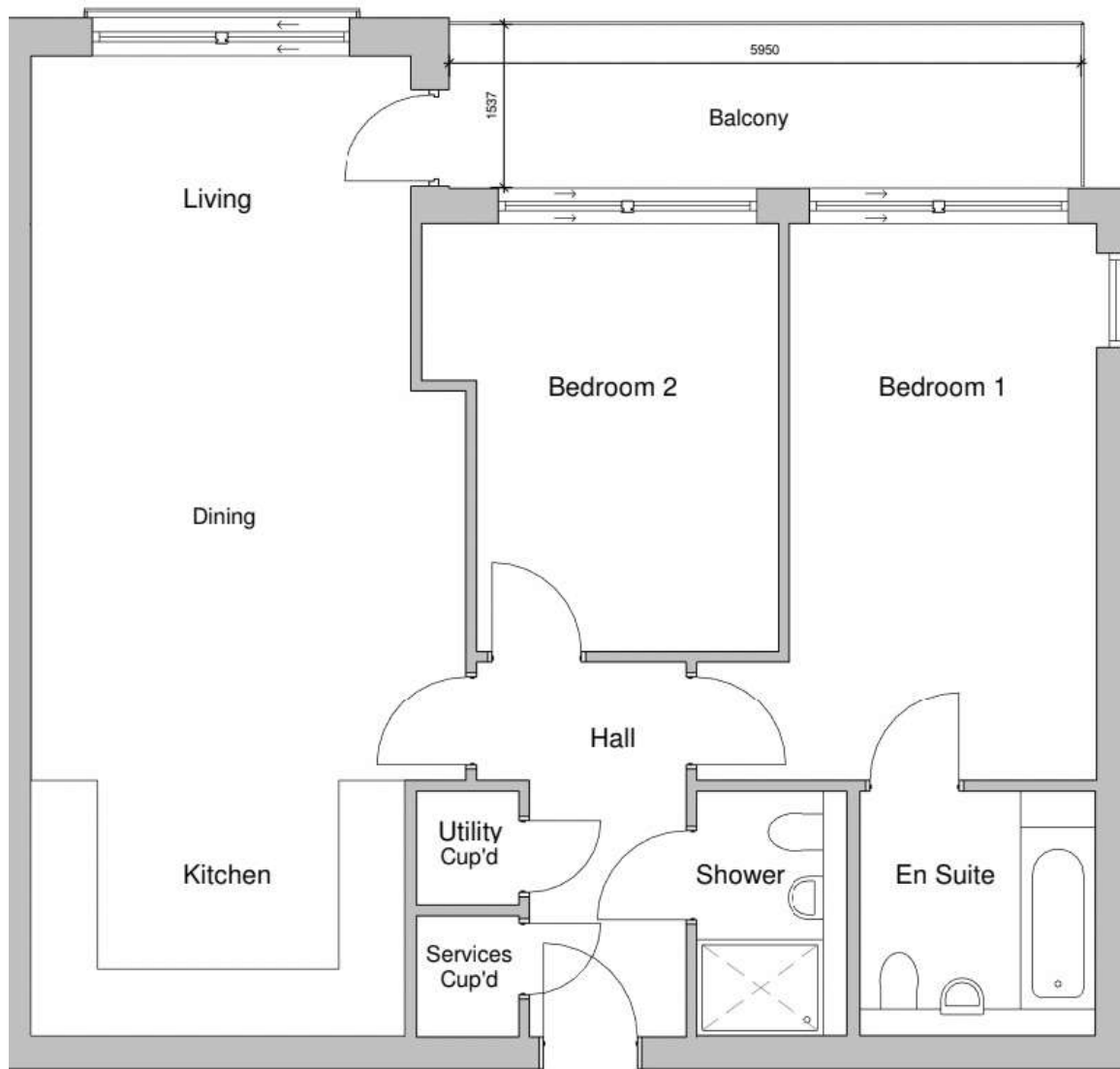
FIRST FLOOR



APARTMENT 12

	Size m	Size ft
Hall	1.675 x 3.535	5'6" x 11'7"
Cupboard	0.935 x 2.305	3'1" x 7'6"
Shower	1.215 x 2.295	4'0" x 7'6"
Kitchen/ Living / Dining	4.133 max x 9.220	13'7" max x 30'3" max
Bedroom 1	2.900 x 5.250	9'6" x 17'3"
En Suite	2.240 x 2.295	7'4" x 7'6"
Bedroom 2	3.350 max x 4.020	11'0" max x 13'2"
GIA	82.7m²	890ft²

FIRST FLOOR



APARTMENT 13

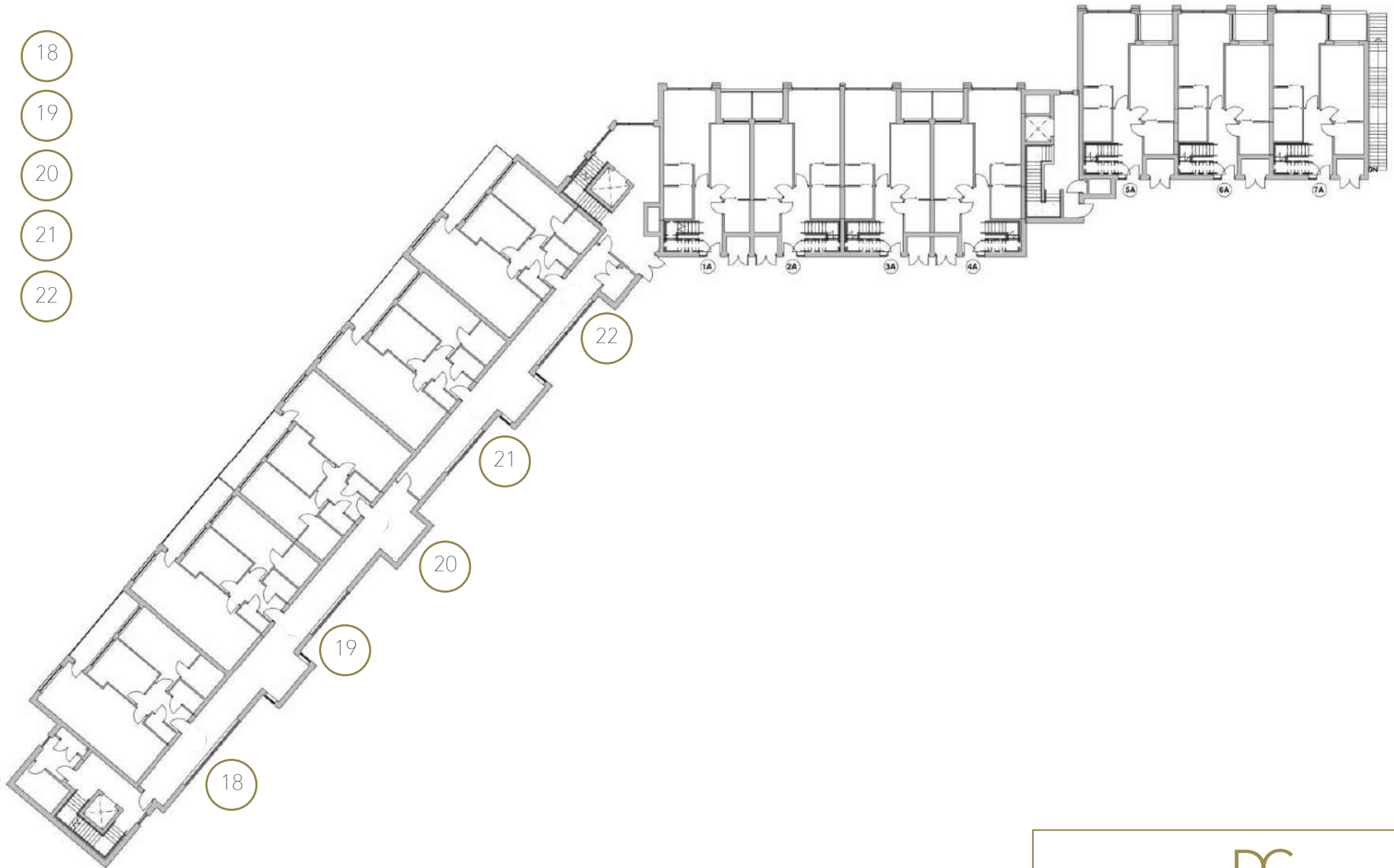
	Size m	Size ft
Hall	1.675 x 3.535	5'6" x 11'7"
Cupboard	0.935 x 2.305	3'1" x 7'6"
Shower	1.215 x 2.295	4'0" x 7'6"
Kitchen/ Living / Dining	4.095 max x 9.220	13'5" max x 30'3" max
Bedroom 1	2.900 x 5.250	9'6" x 17'3"
En Suite	2.240 x 2.295	7'4" x 7'6"
Bedroom 2	3.350 max x 4.020	11'0" max x 13'2"
GIA	82.3m²	886ft²

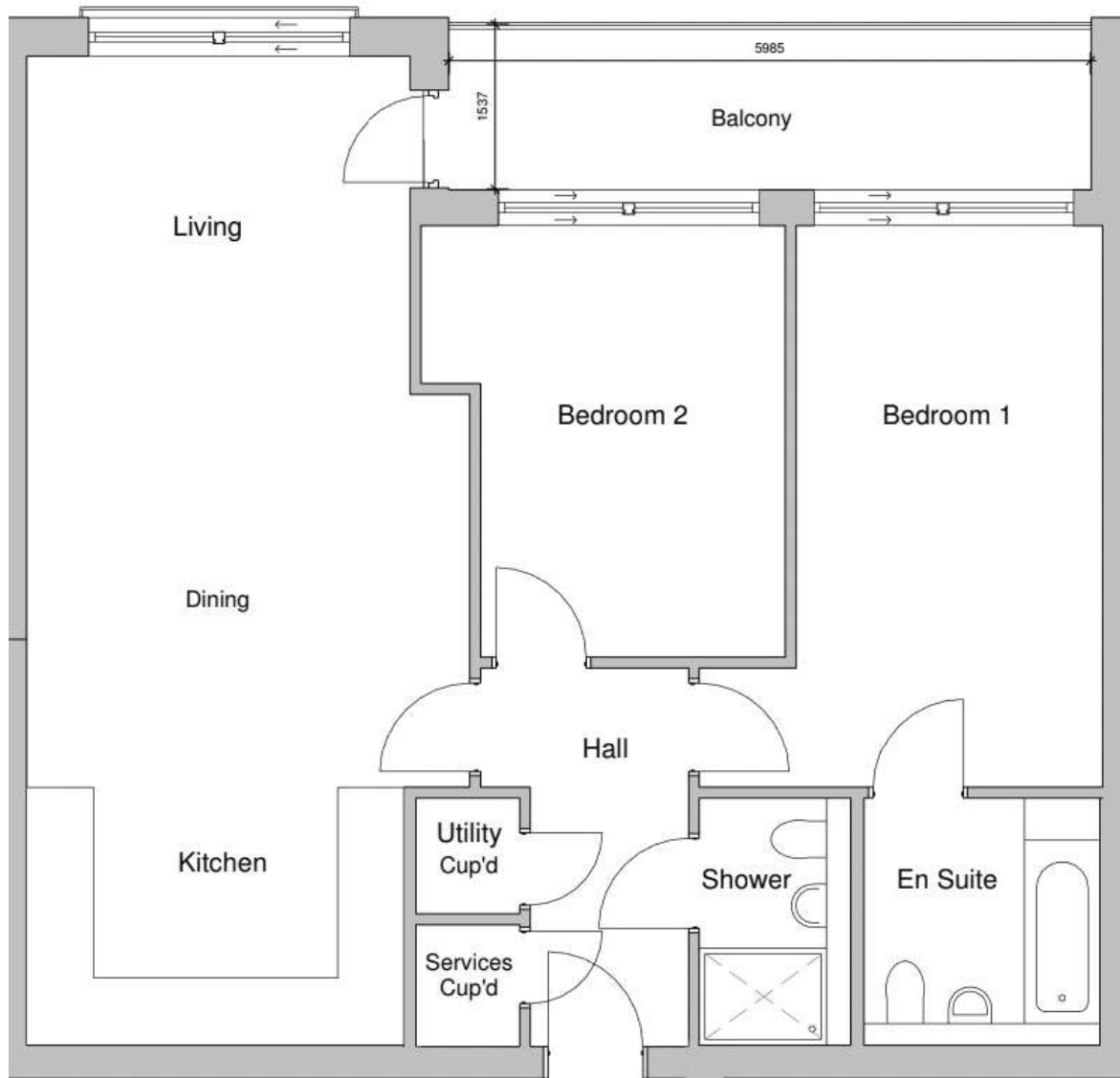
FIRST FLOOR

SECOND FLOOR WEST WING

Apartment Number

- 18
- 19
- 20
- 21
- 22

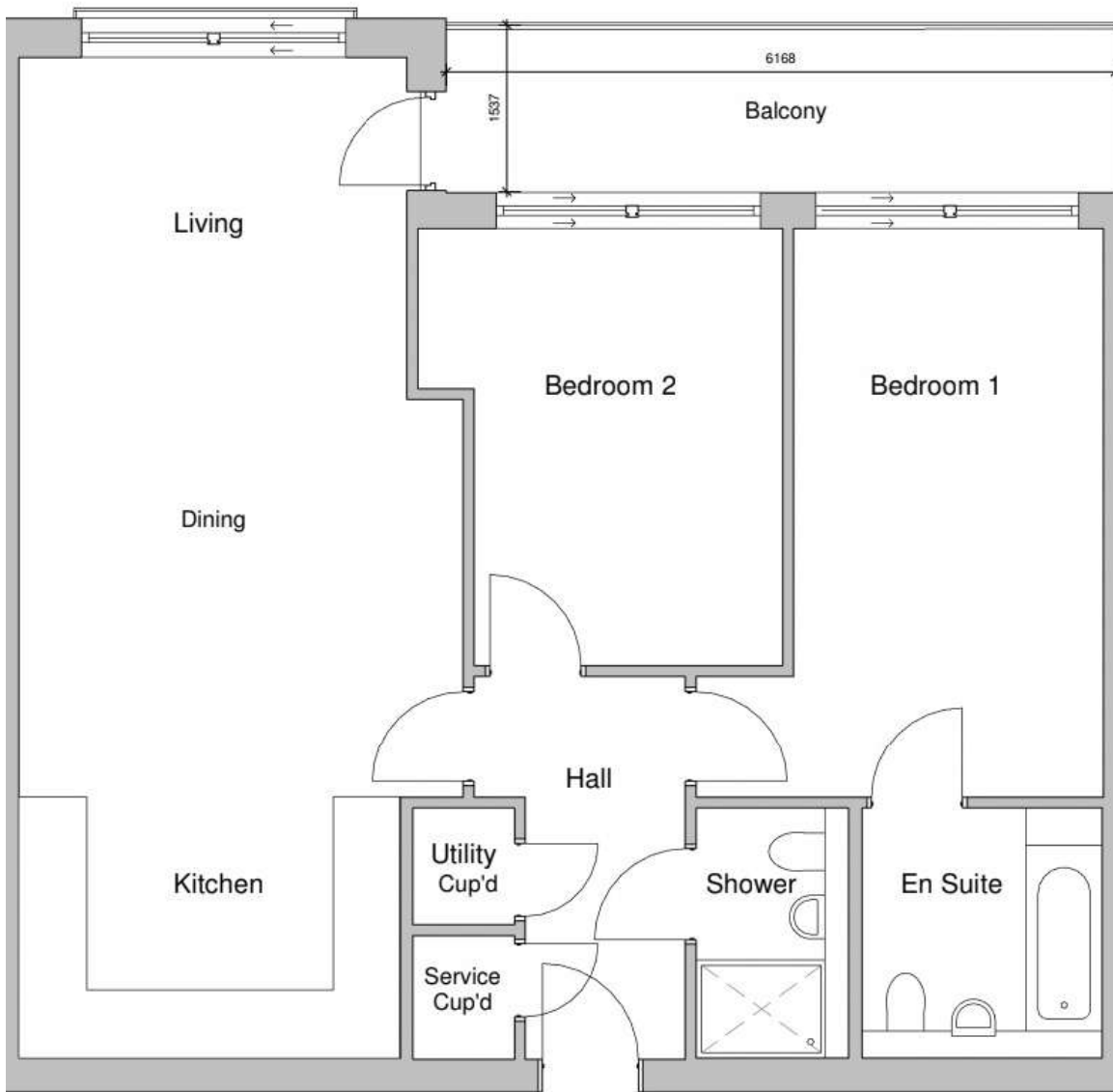




APARTMENT 18

	Size m	Size ft
Hall	1.675 x 3.535	5'6" x 11'7"
Cupboard	0.935 x 2.315	3'1" x 7'7"
Shower	1.215 x 2.295	4'0" x 7'6"
Kitchen/ Living / Dining	4.130 max x 9.220	13'6" max x 30'3" max
Bedroom 1	2.865 x 5.250	9'4" x 17'3"
En Suite	2.205 x 2.295	7'3" x 7'6"
Bedroom 2	3.350 max x 4.020	11'0" max x 13'2"
GIA	82.4m²	887ft²

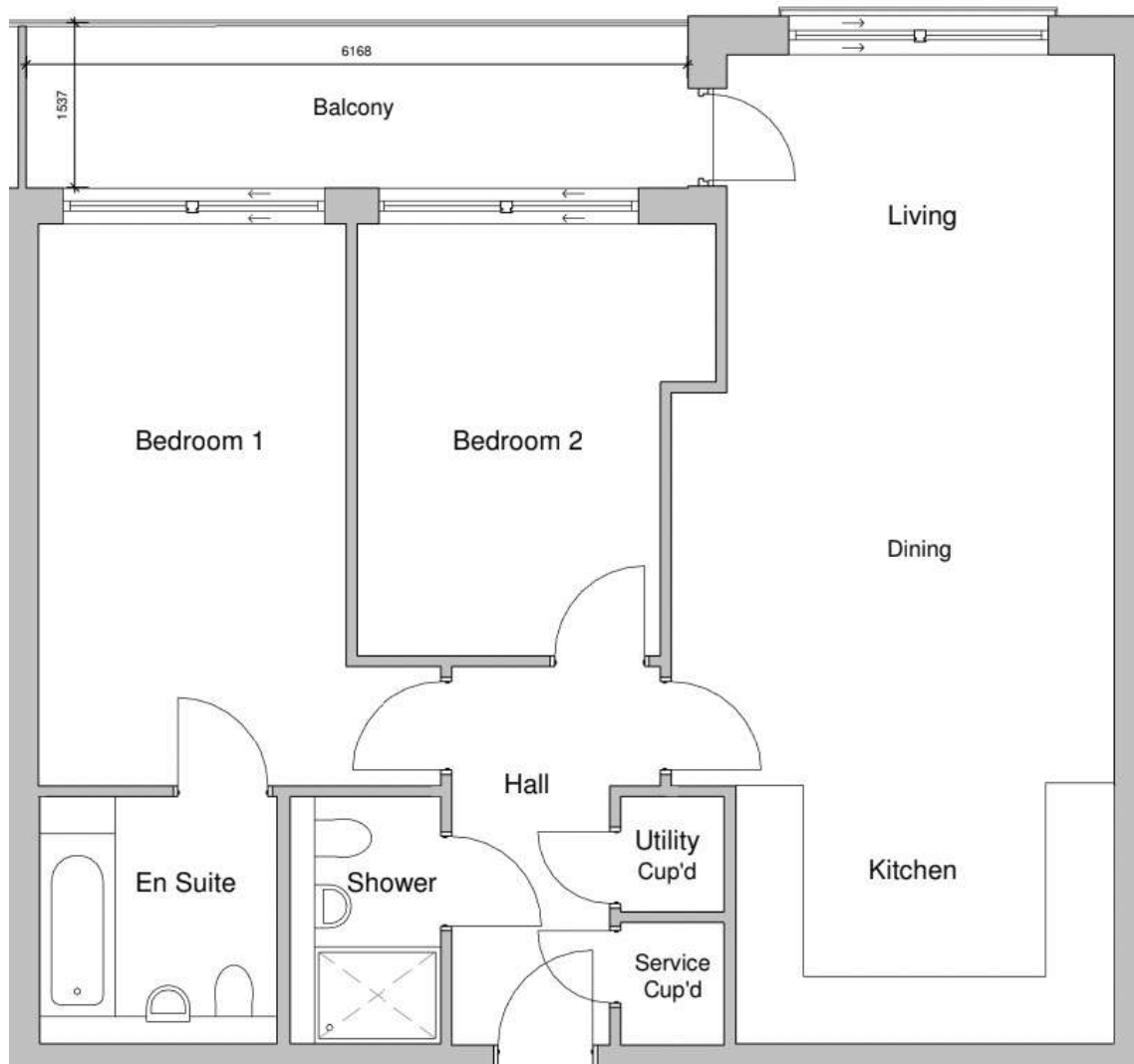
SECOND FLOOR



APARTMENT 19

	Size m	Size ft
Hall	1.675 x 3.535	5'6" x 11'7"
Cupboard	0.935 x 2.305	3'1" x 7'6"
Shower	1.215 x 2.295	4'0" x 7'6"
Kitchen/ Living / Dining	4.090 max x 9.220	13'5" max x 30'3" max
Bedroom 1	2.860 x 5.250	9'4" x 17'3"
En Suite	2.205 x 2.295	7'3" x 7'6"
Bedroom 2	3.350 max x 4.020	11'0" max x 13'2"
GIA	82m²	883ft²

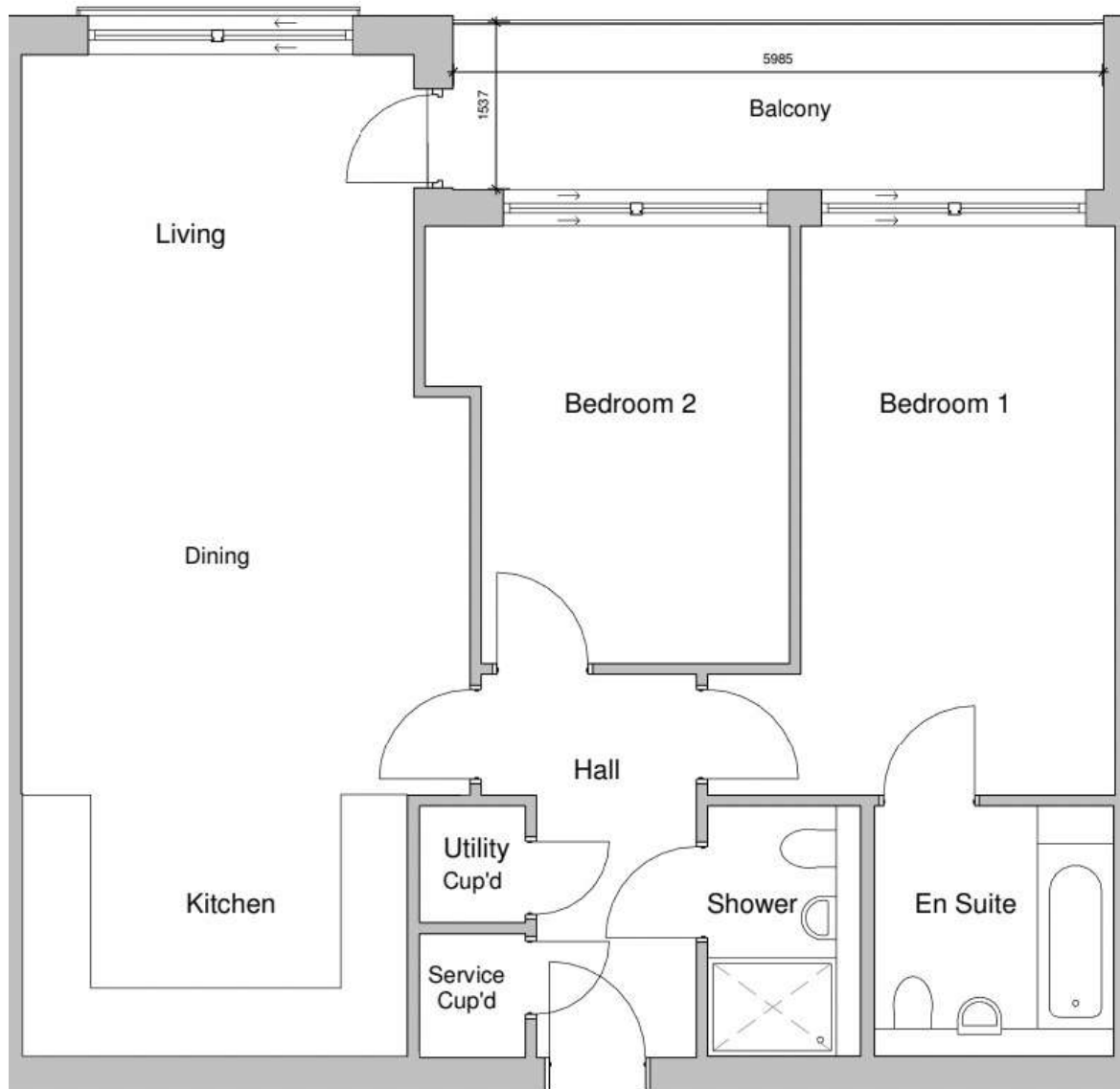
SECOND FLOOR



APARTMENT 20

	Size m	Size ft
Hall	1.675 x 3.535	5'6" x 11'7"
Cupboard	0.935 x 2.305	3'1" x 7'6"
Shower	1.215 x 2.295	4'0" x 7'6"
Kitchen/ Living / Dining	4.133 max x 9.220	13'7" max x 30'3" max
Bedroom 1	2.860 x 5.250	9'4" x 17'3"
En Suite	2.205 x 2.295	7'3" x 7'6"
Bedroom 2	3.350 max x 4.020	11'0" max x 13'2"
GIA	82.4m²	887ft²

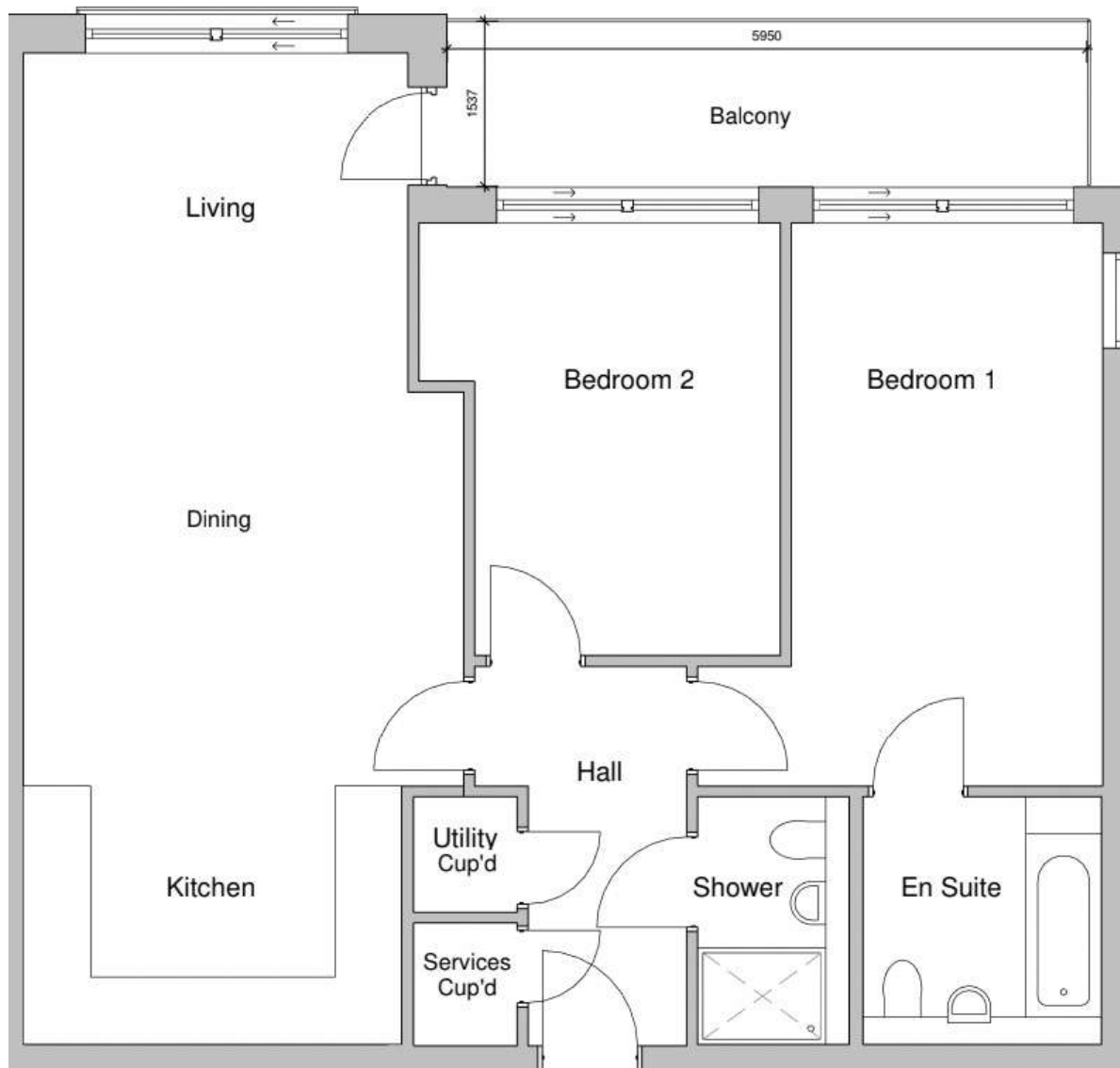
SECOND FLOOR



APARTMENT 21

	Size m	Size ft
Hall	1.675 x 3.535	5'6" x 11'7"
Cupboard	0.935 x 2.305	3'1" x 7'6"
Shower	1.215 x 2.295	4'0" x 7'6"
Kitchen/ Living / Dining	4.133 max x 9.220	13'7" max x 30'3"
Bedroom 1	2.900 x 5.250	9'6" x 17'3"
En Suite	2.240 x 2.295	7'4" x 7'6"
Bedroom 2	3.350 max x 4.020	11'0" max x 13'2"
GIA	82.7m²	890ft²

SECOND FLOOR



APARTMENT 22

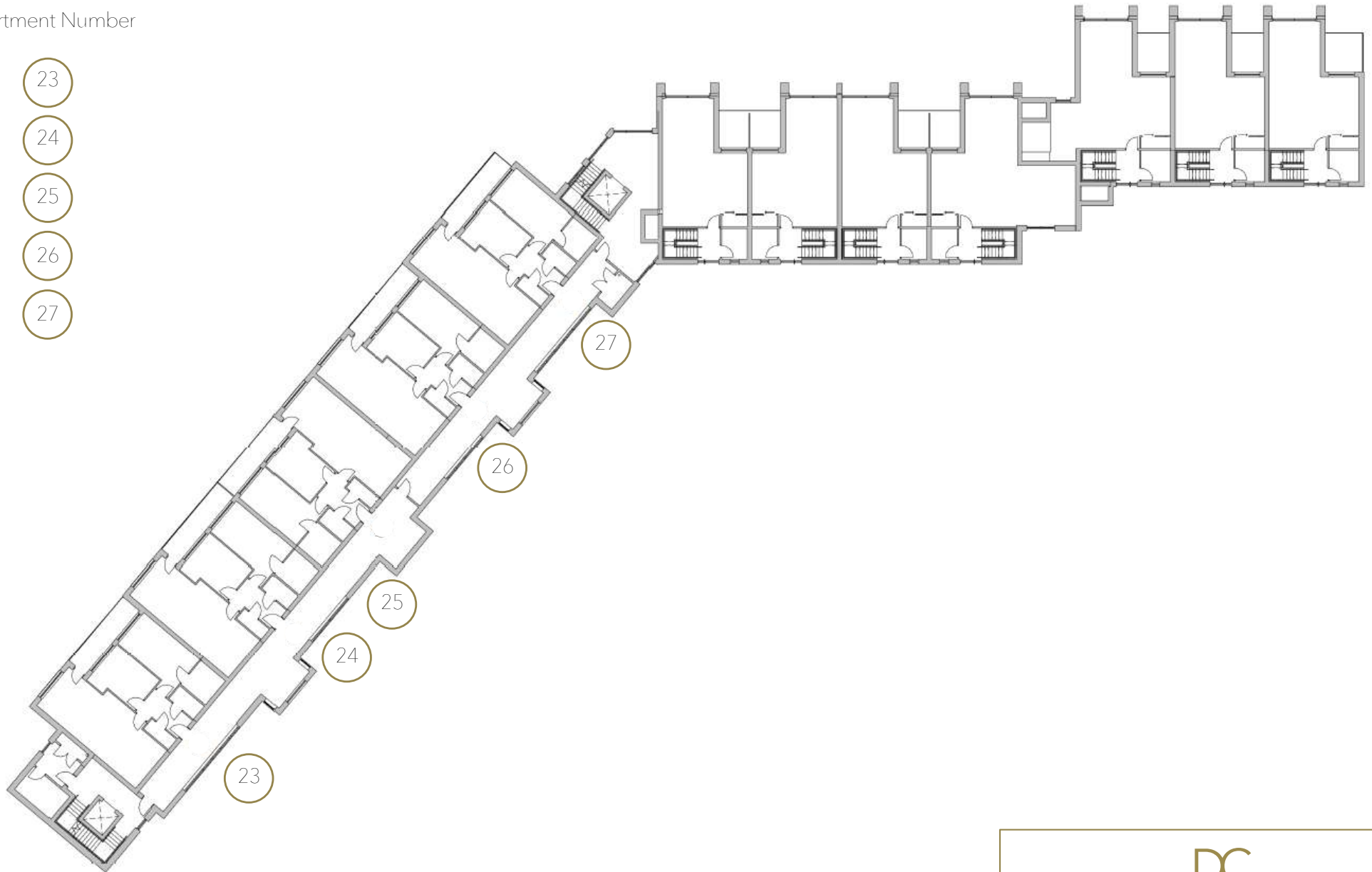
	Size m	Size ft
Hall	1.675 x 3.535	5'6" x 11'7"
Cupboard	0.935 x 2.305	3'1" x 7'6"
Shower	1.215 x 2.295	4'0" x 7'6"
Kitchen/ Living / Dining	4.095 max x 9.220	13'5" max x 30'3"
Bedroom 1	2.900 x 5.250	9'6" x 17'3"
En Suite	2.240 x 2.295	7'4" x 7'6"
Bedroom 2	3.350 max x 4.020	11'0" max x 13'2"
GIA	82.3m²	886ft²

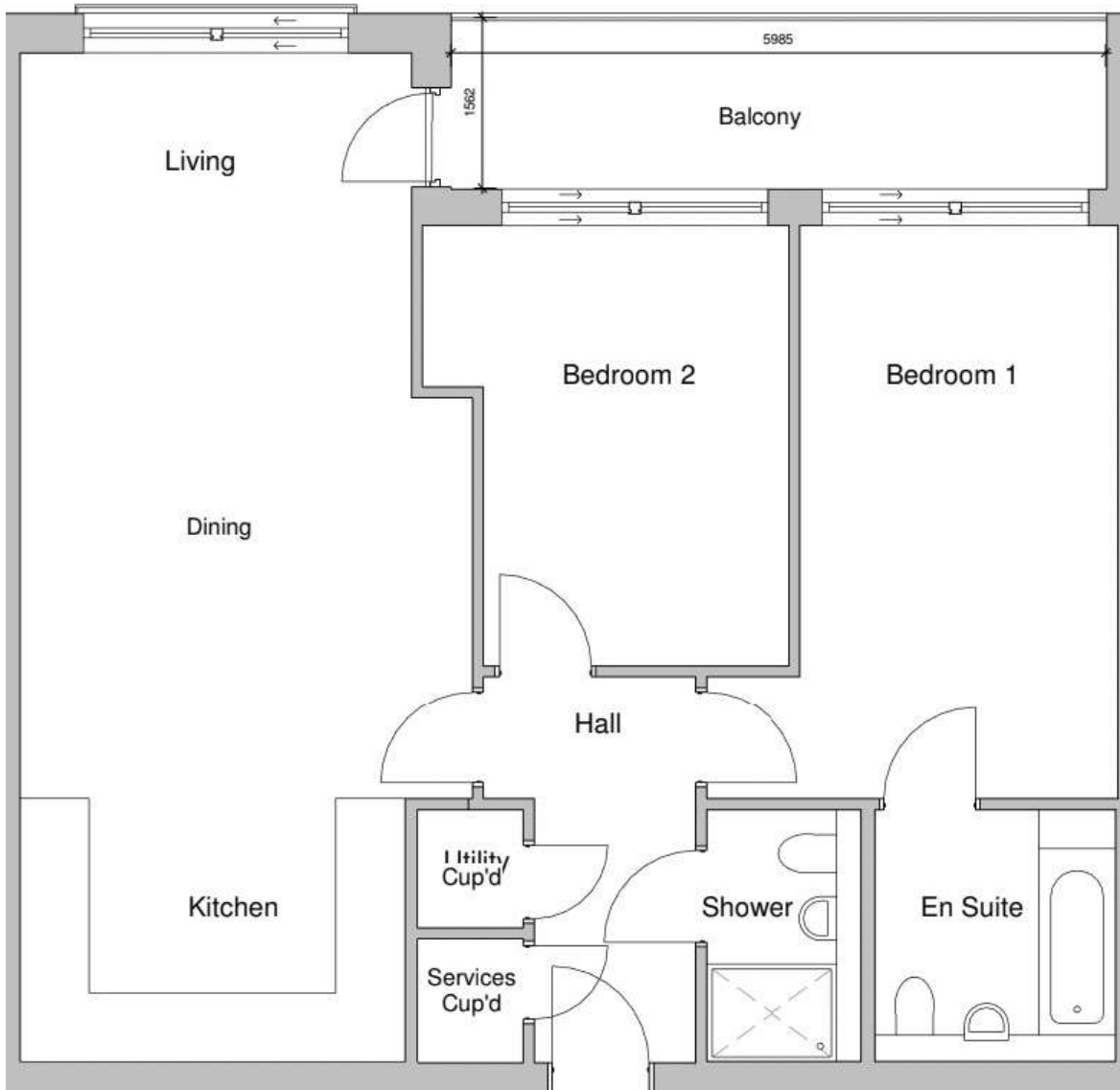
SECOND FLOOR

THIRD FLOOR WEST WING

Apartment Number

- 23
- 24
- 25
- 26
- 27

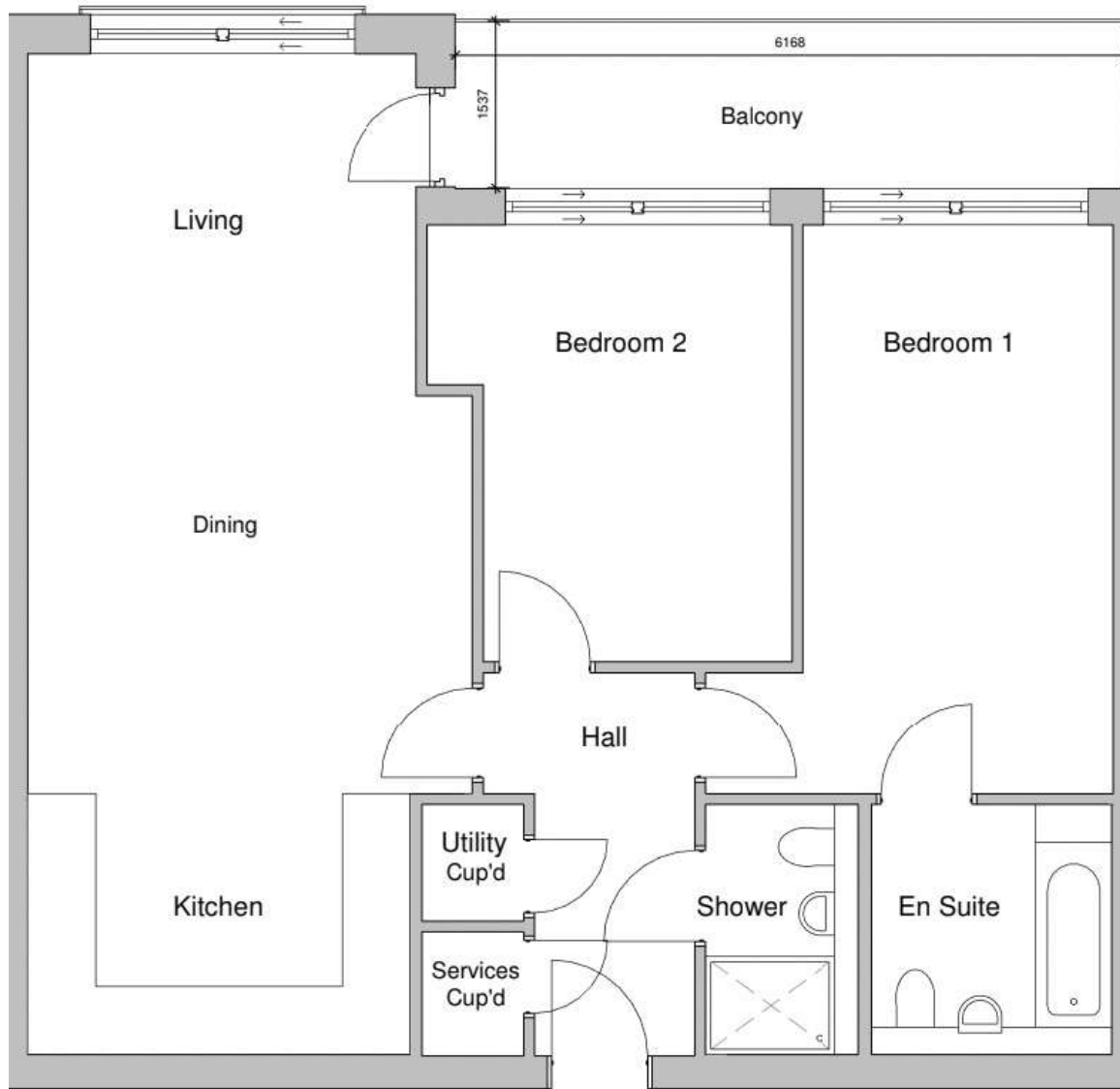




APARTMENT 23

	Size m	Size ft
Hall	1.675 x 3.535	5'6" x 11'7"
Cupboard	0.935 x 2.315	3'1" x 7'7"
Shower	1.215 x 2.295	4'0" x 7'6"
Kitchen/ Living / Dining	4.130 max x 9.220	13'6" max x 30'3" max
Bedroom 1	2.865 x 5.250	9'4" x 17'3"
En Suite	2.205 x 2.295	7'3" x 7'6"
Bedroom 2	3.350 max x 4.020	11'0" max x 13'2"
GIA	82.4m²	887ft²

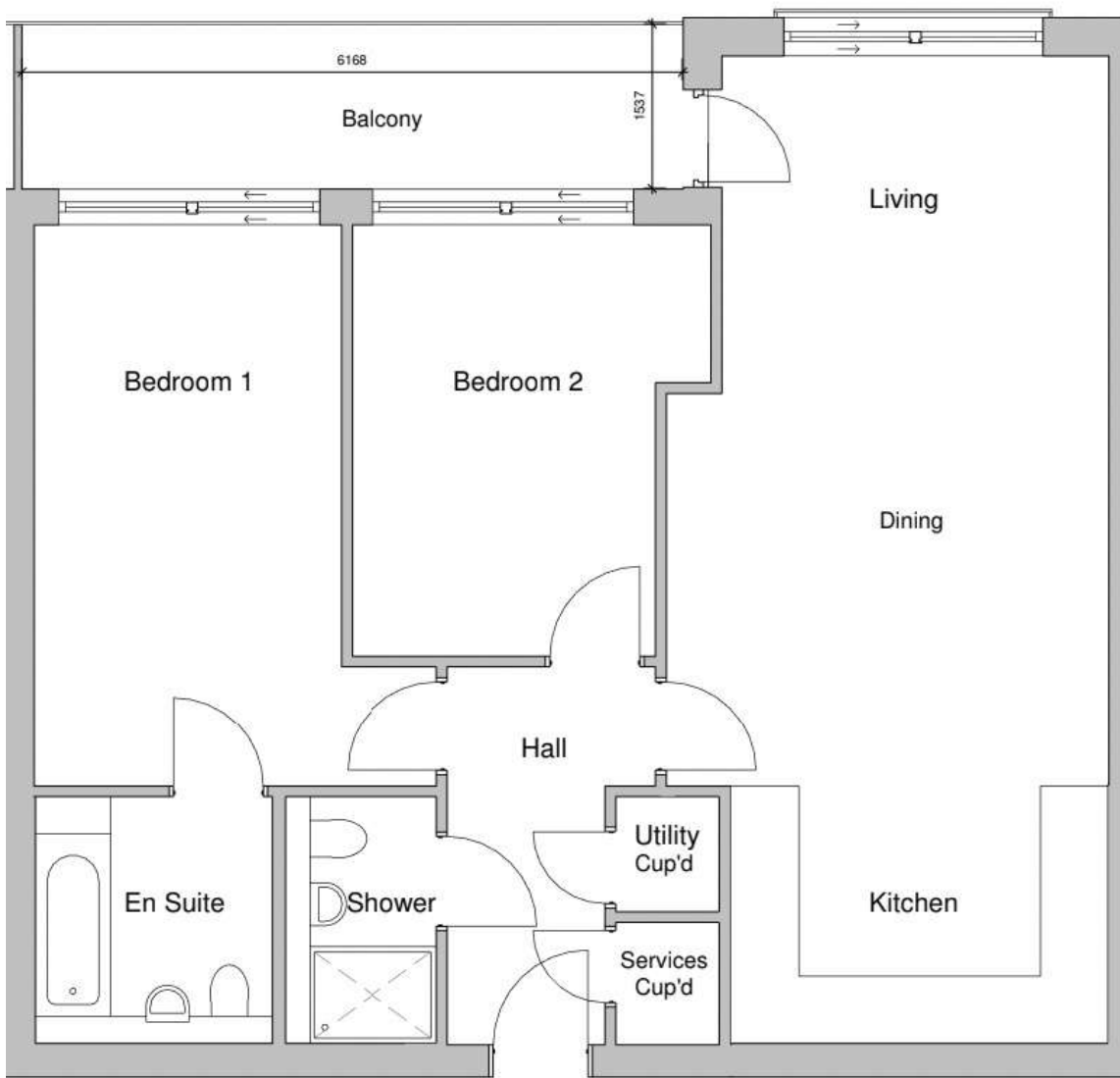
THIRD FLOOR



APARTMENT 24

	Size m	Size ft
Hall	1.675 x 3.535	5'6" x 11'7"
Cupboard	0.935 x 2.305	3'1" x 7'6"
Shower	1.215 x 2.295	4'0" x 7'6"
Kitchen/ Living / Dining	4.090 max x 9.220	13'5" max x 30'3" max
Bedroom 1	2.860 x 5.250	9'4" x 17'3"
En Suite	2.205 x 2.295	7'3" x 7'6"
Bedroom 2	3.350 max x 4.020	11'0" max x 13'2"
GIA	82m²	883ft²

THIRD FLOOR

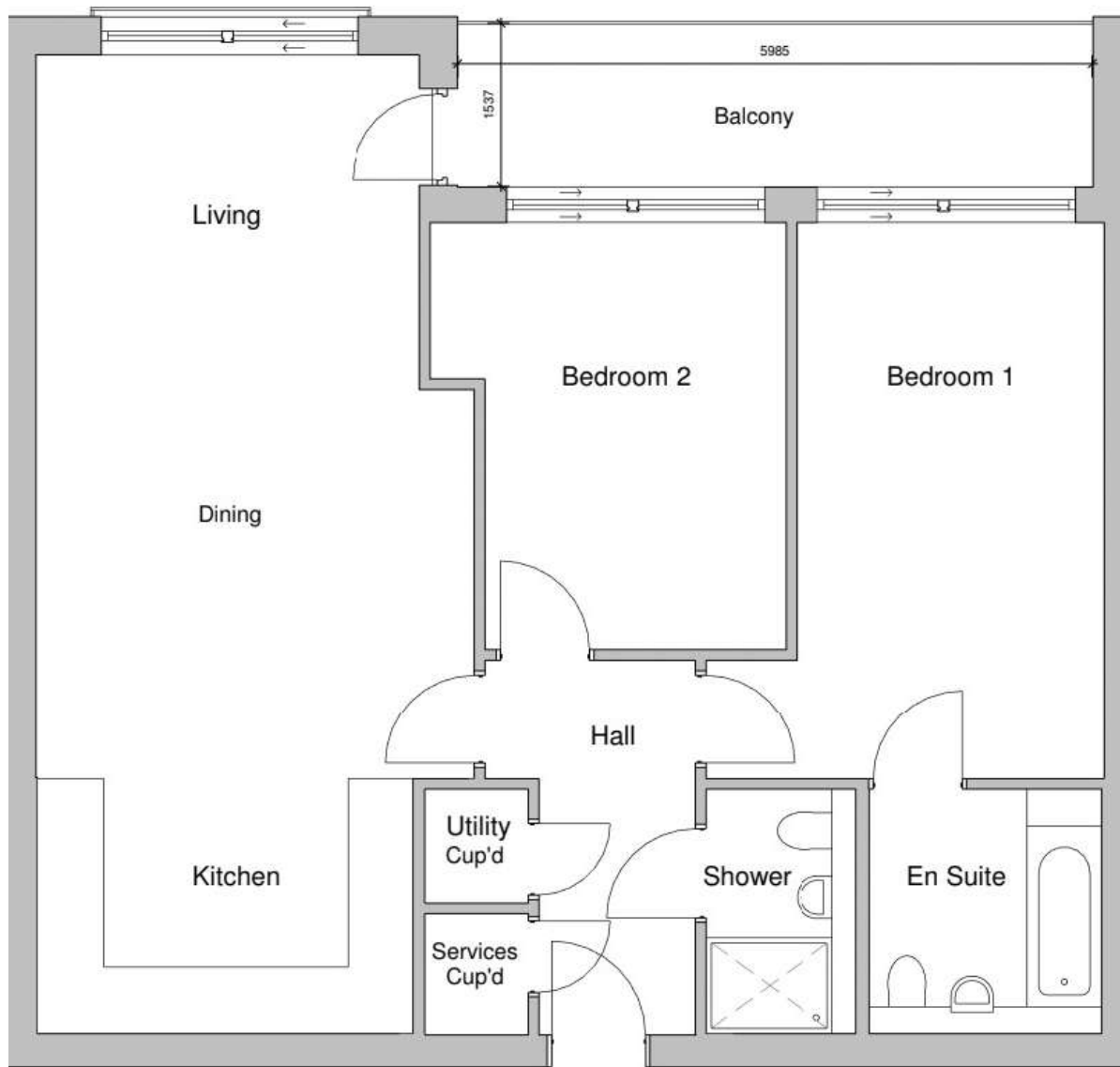


APARTMENT 25

	Size m	Size ft
Hall	1.675 x 3.535	5'6" x 11'7"
Cupboard	0.935 x 2.305	3'1" x 7'6"
Shower	1.215 x 2.295	4'0" x 7'6"
Kitchen/ Living / Dining	4.133 max x 9.220	13'7" max x 30'3" max
Bedroom 1	2.860 x 5.250	9'4" x 17'3"
En Suite	2.205 x 2.295	7'3" x 7'6"
Bedroom 2	3.350 max x 4.020	11'0" max x 13'2"
GIA	82.4m²	887ft²

THIRD FLOOR

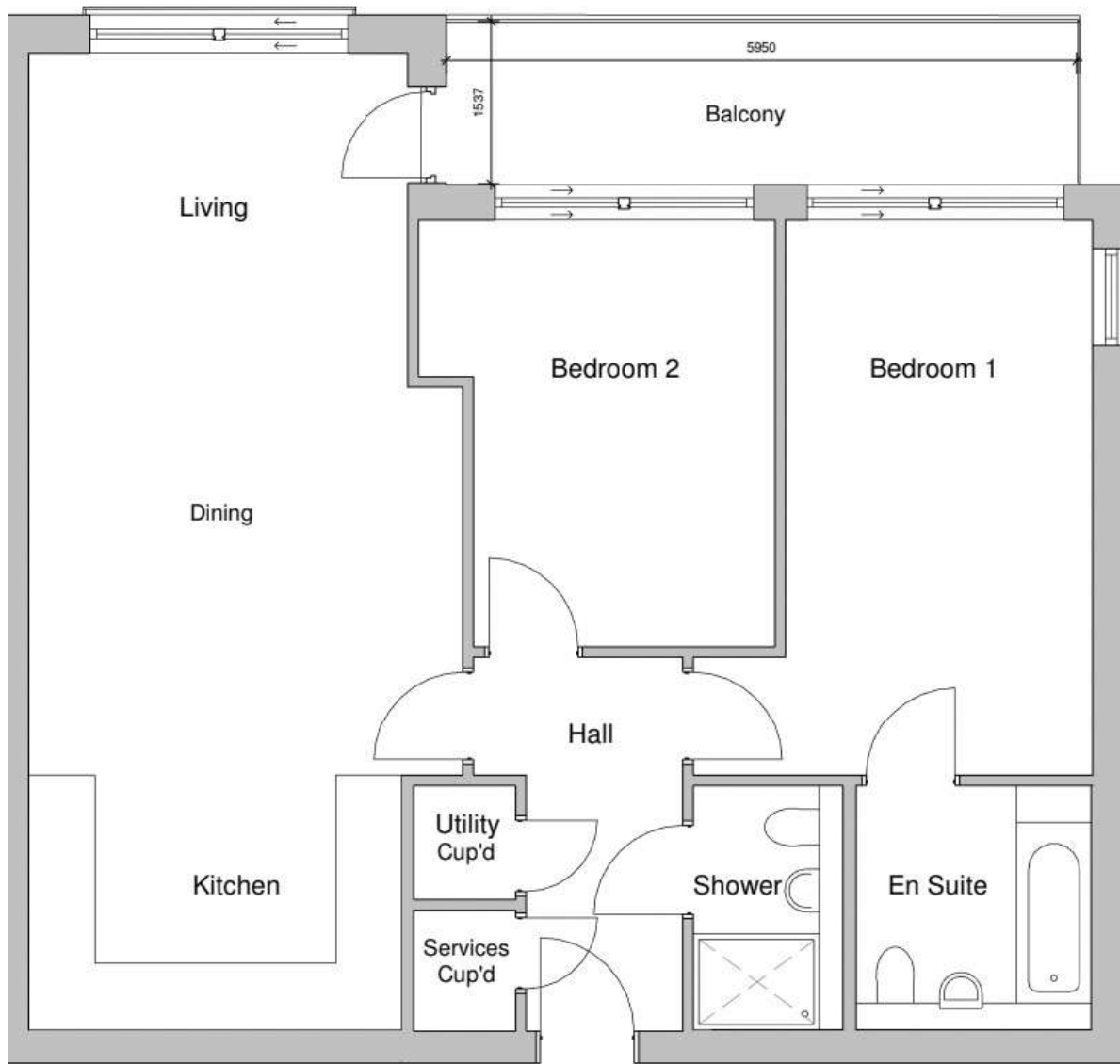




APARTMENT 26

	Size m	Size ft
Hall	1.675 x 3.535	5'6" x 11'7"
Cupboard	0.935 x 2.305	3'1" x 7'6"
Shower	1.215 x 2.295	4'0" x 7'6"
Kitchen/ Living / Dining	4.133 max x 9.220	13'7" max x 30'3" max
Bedroom 1	2.900 x 5.250	9'6" x 17'3"
En Suite	2.240 x 2.295	7'4" x 7'6"
Bedroom 2	3.350 max x 4.020	11'0" max x 13'2"
GIA	82.7m²	890ft²

THIRD FLOOR



APARTMENT 27

	Size m	Size ft
Hall	1.675 x 3.535	5'6" x 11'7"
Cupboard	0.935 x 2.305	3'1" x 7'6"
Shower	1.215 x 2.295	4'0" x 7'6"
Kitchen/ Living / Dining	4.095 max x 9.220	13'5" max x 30'3"
Bedroom 1	2.900 x 5.250	9'6" x 17'3"
En Suite	2.240 x 2.295	7'4" x 7'6"
Bedroom 2	3.350 max x 4.020	11'0" max x 13'2"
GIA	82.3m²	886ft²

THIRD FLOOR



SALES@DERRINGTONCOLLECTION.COM

WWW.DERRINGTONCOLLECTION.COM

DC
DERRINGTON COLLECTION

DISCLAIMER

*Subject to contract. Please note - statements contained within this brochure are believed to be correct. They are not to be regarded as statements or representations of fact and neither the selling agent or developer guarantee their accuracy. The artist's impressions and floor plans are intended to serve only as a general guide to the appearance and layout of the development. However, it may be necessary, and rights are reserved for the developer to make any alterations to the layout, appearance and specification of the development without formal notice. Dimensions are approximated having been scaled from plan. This brochure does not form part of the contract.